

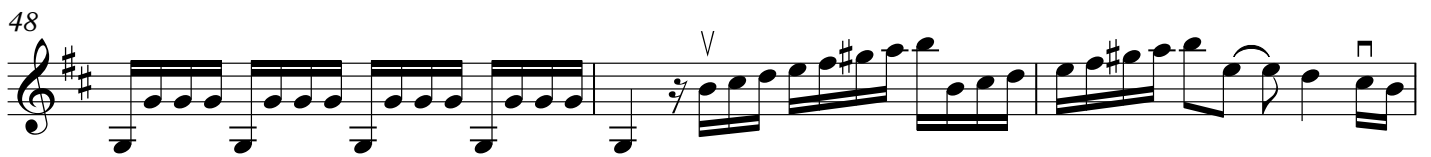
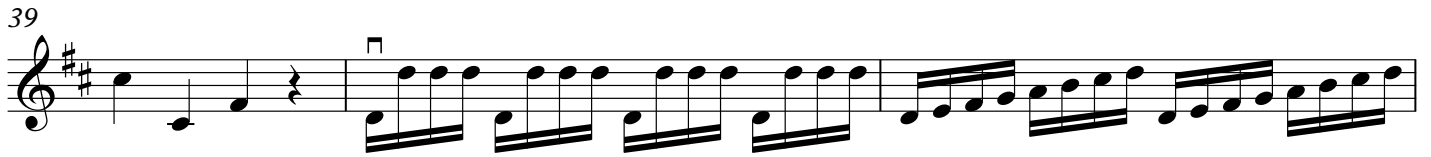
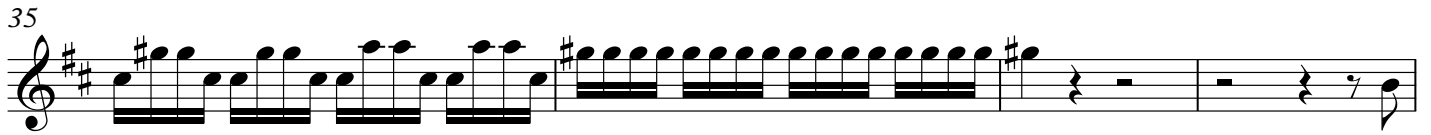
Sinfonía en Re Mayor RV 122

Vivaldi

Allegro



Musical score for Violín II, measures 1-31. The score is in treble clef, key of D major (two sharps), and common time (C). It features various rhythmic patterns including eighth and sixteenth notes, and rests. Dynamic markings include *p* (piano) and *f* (forte). Performance instructions include *V* (Vibrato) and *7/7* (sevens). Measure numbers 3, 6, 9, 13, 16, 19, 22, 24, 27, and 31 are indicated at the start of their respective staves.



1 **Largo**

Musical notation for the Largo section, measures 1-4. The music is in treble clef, key of D major (one sharp), and 12/8 time. It features a slow, melodic line with several measures of rests. The first measure starts with a quarter note G4, followed by quarter notes A4, B4, and C5. The second measure has a quarter rest, followed by quarter notes D5, C5, B4, and A4. The third measure has a quarter rest, followed by quarter notes G4, F4, E4, and D4. The fourth measure has a quarter rest, followed by quarter notes C4, B3, A3, and G3. Vertical 'V' marks are placed above the notes in measures 1, 2, 3, and 4.

1 **Presto**

Musical notation for the Presto section, measures 1-21. The music is in treble clef, key of D major (one sharp), and 3/8 time. It features a fast, rhythmic line with many sixteenth notes. The first measure starts with a quarter note G4, followed by eighth notes A4, B4, and C5. The second measure has eighth notes D5, C5, B4, and A4. The third measure has eighth notes G4, F4, E4, and D4. The fourth measure has eighth notes C4, B3, A3, and G3. The fifth measure has a quarter rest, followed by eighth notes G4, F4, E4, and D4. The sixth measure has eighth notes C4, B3, A3, and G3. The seventh measure has eighth notes F4, E4, D4, and C4. The eighth measure has eighth notes B3, A3, G3, and F3. The ninth measure has eighth notes E3, D3, C3, and B2. The tenth measure has eighth notes A2, G2, F2, and E2. The eleventh measure has eighth notes D2, C2, B1, and A1. The twelfth measure has eighth notes G1, F1, E1, and D1. The thirteenth measure has eighth notes C1, B0, A0, and G0. The fourteenth measure has eighth notes F0, E0, D0, and C0. The fifteenth measure has eighth notes B0, A0, G0, and F0. The sixteenth measure has eighth notes E0, D0, C0, and B0. The seventeenth measure has eighth notes A0, G0, F0, and E0. The eighteenth measure has eighth notes D0, C0, B0, and A0. The nineteenth measure has eighth notes G0, F0, E0, and D0. The twentieth measure has eighth notes C0, B0, A0, and G0. The twenty-first measure has eighth notes F0, E0, D0, and C0. Vertical 'V' marks are placed above the notes in measures 1, 2, 3, 4, 10, 11, 17, 18, and 21.