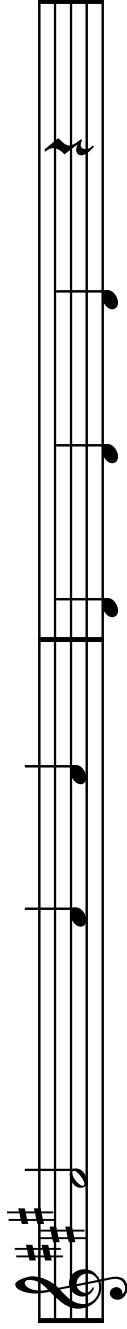
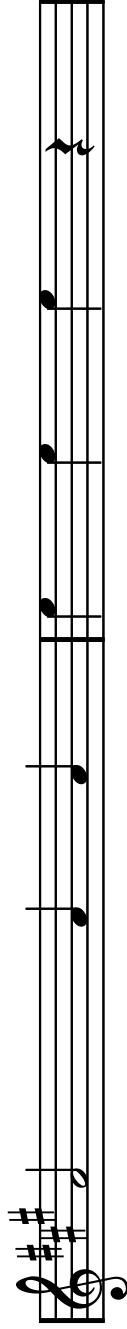
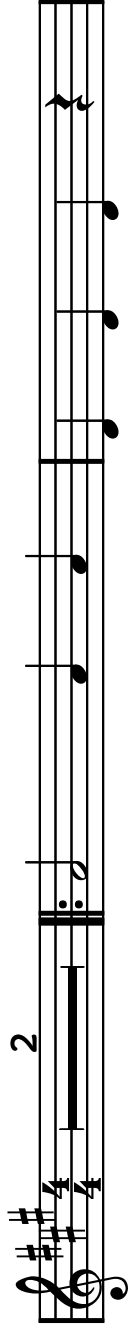


Blueberry Pie



1. 2.

1

The fourth staff contains the first and second endings. The first ending begins with a bracketed '1.' followed by quarter notes G4, A4, B4, C5, B4, and A4, then a repeat sign and a quarter note on G4. The second ending begins with a bracketed '2.' followed by quarter notes G4, A4, B4, C5, and B4. The staff concludes with a double bar line and a fermata over the final quarter note on G4. A fermata above the final quarter note is accompanied by the number '1'.